



Lisbon Meeting, 23-24 January 2017

PRACTICAL INFORMATION

Arriving at Lisbon

By air

After arriving at Lisbon airport, go to the main Arrivals Hall. There you find a Lisbon Tourist Office (running from 6:00 a.m. to 1:00 a.m.) where you can get a map of the city and some basic information.

There are express-buses at the Arrivals exit (called Aero-Bus and Aero-Shuttle) which run between the airport and the city center. The regular fare is 3€. Buses run every 20 minutes, from 7:45 a.m. to 8:45 p.m. Ask the person at the Airport's Tourist Office (or the bus driver) to tell you where you should get off, by showing her/him the address of your hotel. Besides the express-buses, there are also regular buses (from Carris – www.carris.pt) that serve Centre City and taxis are relatively inexpensive.

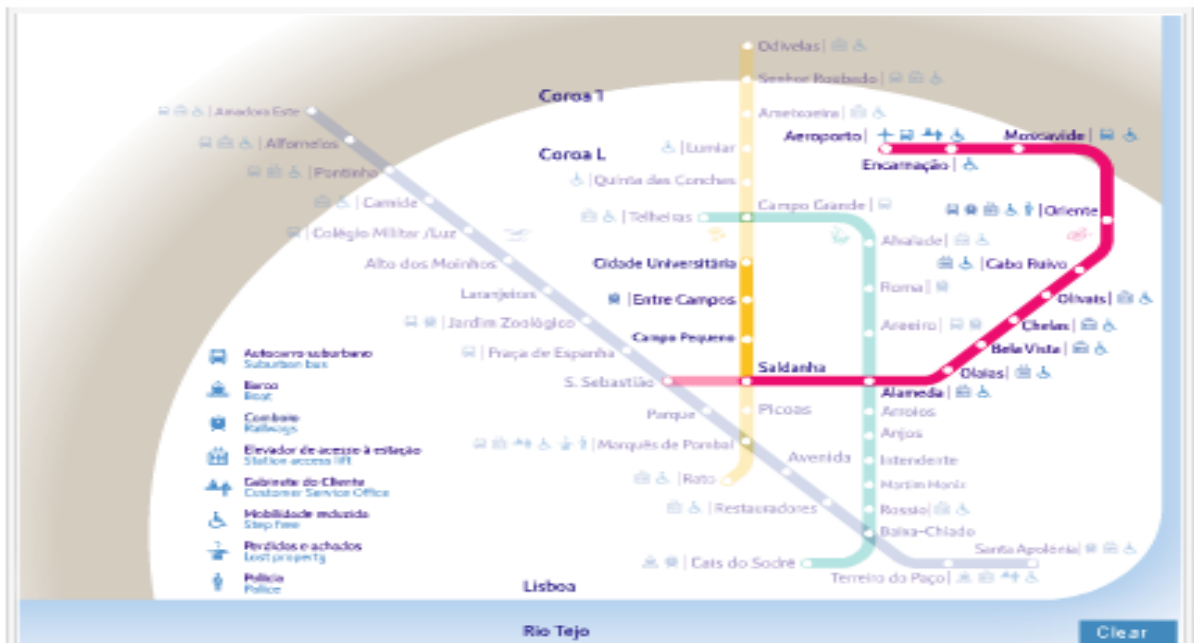
There is also available the new Airport Metro station (red line). Please, see information (journey plan to the conference and/or to the hotels near-by) and fares below.

Lisbon Tourism website (<https://www.visitlisboa.com/plan/useful-information>)



Lisbon Meeting, 23-24 January 2017

Journey Planner



Blue Line
Green Line

Yellow Line
Red Line



70 %

Journey data

Aeroporto

Cidade Universitária

Day:

Week day

Weekend/Holiday

Route details

Mean journey duration

min seg

31 30

Interchanging stations:

Saldanha



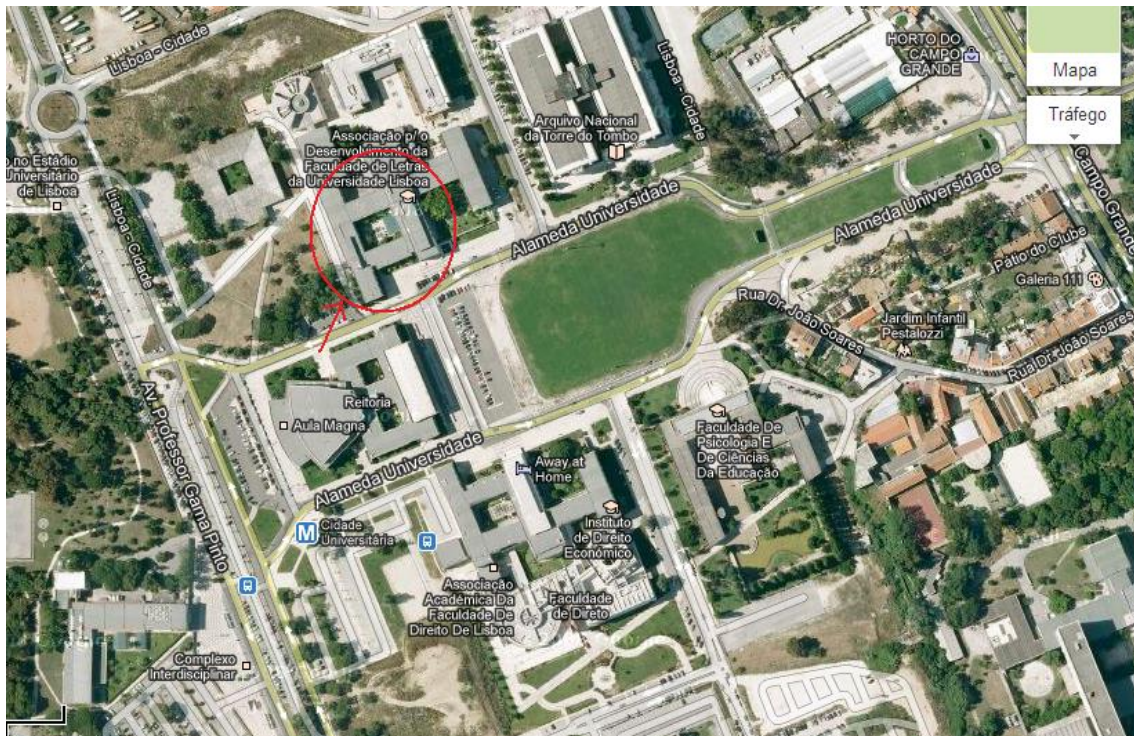
Lisbon Meeting, 23-24 January 2017

VENUE

University of Lisbon, Faculdade de Letras

Address:

Alameda da Universidade, 1600-214, Lisboa



Rooms:

- Amphitheater III
- Room Leite de Vasconcelos
- Room Lindley Cintra
- Room Anglísticos
- Room 2.10
- Room 2.12
- Room 4
- Room 8.1